

[Print a condensed .pdf](#) copy of this newsletter, two web pages per sheet of paper.



[Website](#) [What's New](#) [Catalog](#) [DocStore](#) [Facebook](#) [Officials](#) [Member Portal](#) [Contact Us](#)



*Christmas in July Celebration, Texas Style, Tallwood, July 14;
More Photos Available at [This Link](#)*

July 21, 2017

Editor of the Week: Sheri Siesseger

Table of Contents

- [Alerts & Notices](#)
- [OLLI-Mason Involved in Major NEH Grant Effort and Curriculum Resource Publication for National OLLI Network](#)
- [Looking Forward to Fall Term at OLLI!](#)

- [Highlights of Special Events for Fall](#)
- [Understanding the OLLI Budget Part Five: General and Administrative](#)
- [YEEHAW and HO HO HO!](#)
- ["Add to Cart" Payment Policy for Trips a Success!](#)
- [Photo of the Month](#)
- [Poet's Corner](#)
- [Arts & Music at George Mason](#)
- [Meetings & Clubs](#)
- [About OLLI E-News](#)

Alerts & Notices

OLLI offices will be closed July 31 through August 11, reopening Monday, August 14.

The next issue of *E-News* will be August 4.

[Back to Top of Page](#)

OLLI-Mason Involved in Major NEH Grant Effort and Curriculum Resource Publication for National OLLI Network



By Jennifer Disano, Executive Director

I am pleased to announce the recent publication of a special curriculum resource book, *The Humanities of War*, with a major academic contribution by Mason University Professor and Provost Emeritus Dr. Peter Stearns. I was pleased to be a member of the committee tasked with the success of this effort. The formal announcement from the Osher National Resource Center (NRC) appears at [this link](#).

[Back to Top of Page](#)

Looking Forward to Fall Term at OLLI!

By Doris Bloch, Program Committee Co-chair

There is lots of excitement at OLLI—we are busy finalizing the fall catalog and there are

many intriguing classes offered. Everyone is sure to find something of interest, whether your interests are eclectic or specific to only one or two areas. Here is a sneak peek at the fall lineup.

A course that may pique your interest is F309/L317 "Comparing the French and Russian Revolutions," taught by two retired George Mason history professors and scholars. This promises to be a stimulating class with a unique perspective. For international affairs buffs, look into F308 "Henry Kissinger and the American Approach to Foreign Policy." Other classes to consider are L315 "Roman Emperors Gone Bad" or L608 "From Peter to Pope: The Development of the Roman Catholic Papacy from St. Peter Onward, Part 1."

If your tastes run to art history, you will want to check out R114 "The Four Greatest Sculptors: From the Renaissance to the Modern Era," to be offered in Reston. Glenn Winters, the Virginia Opera outreach director, will present F102 "Understanding Opera, Part 1," which tracks the company's two productions coming to the George Mason Center for the Arts this fall.

OLLI will repeat the highly popular "True Colors: Self Awareness and Interpersonal Relationships" course, which generated a long wait list when offered in 2016. Four sessions will be available in the upcoming fall term, F615A/B/C/D.

Literature classes that have great potential (among many others) are F409 "Hemingway's The Old Man and the Sea" and F403 "Shakespeare in Twilight: The Great Romances."

A notable humanities course being offered is F658/L659 "ISIS Defectors: Inside Stories of the Terrorist Organization."

We anticipate so many exciting classes in the fall term; this is just a smattering, so stick around to view them all. The much anticipated fall catalog will be online and mailed out in August. And please remember—you are encouraged to bring a friend to two sessions of any OLLI class not oversubscribed! We love visitors.

[Back to Top of Page](#)

Highlights of Special Events for Fall



By Alice Slayton Clark, Communications and Program Associate

If you think the course offerings for fall term 2017 are impressive, check out the roster of special events. From bus trips to presentations and demonstrations, OLLI program planners have something for everyone—and more!

Interested in art, architecture or astronomy? Enjoy classes on Frank Lloyd Wright, valuing jewelry and antiques, Italian Renaissance with OLLI favorite Chris With, and a visit to the Mason Observatory with a telescopic viewing of the sun. If economics tickles your fancy, don't miss a special presentation on capitalism, "Is Greed Good?" by renowned *Washington Post* columnist Steven Pearlstein.

History and current affairs buffs can dive deep into presentations on Elie Wiesel, Alexander Hamilton, Kent State, and the prevalence of human trafficking in Northern Virginia. Dr. Peter Stearns is back by popular demand with a between-term lecture in September on "Episodes of Tolerance in World History."

Music aficionados will be impressed with classes ranging from Beethoven to special military bands. And our literati will enjoy forays into the lives and literature of Robert Frost and William Shakespeare accompanied by an Elizabethan feast. Autumn always marks the annual Fall for the Book festival, this year featuring, among other things, Colson Whitehead's *The Underground Railroad* and a Jane Austen panel and tea party hosted by OLLI at Fairfax Old Town Hall.

Intrigued? This is just the tip of the iceberg. Discover something for you in our fall-term course catalog. And remember to sign up early! Bus trips and socials fill quickly as they are registered on a first-come, first-served basis.

[Back to Top of Page](#)

Inside OLLI-Mason



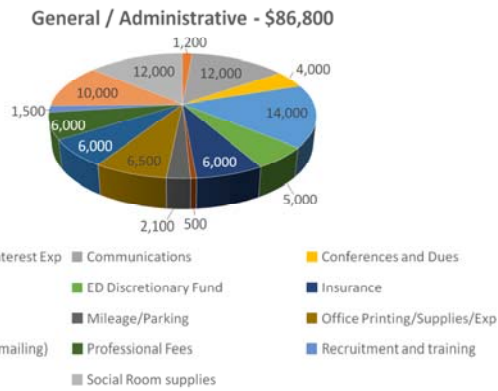
Understanding the OLLI Budget Part Five: General and Administrative



By Paul Howard, Board Member and OLLI Finance Committee Member

Ed. Note: This is part five of a series of six articles on the OLLI budget, prepared by the Finance Committee to provide insight into the OLLI budget process for E-News readers.

This figure shows general and administrative expenses projected for this year.



General and Administrative expenses constitute the third largest budget category—\$86,800 for 2017. Straining with 14 sub-categories, this includes \$14,000 for the convenience of paying our dues with credit cards, \$12,000 for purchase of Social Room Supplies—coffee and cookies, and \$12,000 for communications—phone and internet services. Registration system expenses for software and maintenance—\$10,000. The remaining 44%, in alphabetical order: bank service charges; conference/dues; Executive Director discretionary; insurance; meals; mileage/parking; office printing/supplies; postage—including bulk mail); professional fees; and recruitment/training.

[Back to Top of Page](#)

YEEHAW and HO HO HO!



By Martha Powers, Member Services Committee Chair and Board Member

OLLI's second annual Christmas in July (Texas Style!) party drew at least 50 attendees on Friday, July 14. They enjoyed homemade cookies and snacks, including sweet tea, Texas Trash, Texas sheet cake, and cookies shaped like armadillos and hot peppers. Once again Jim Dunphy played Santa Claus (our MC), and Toni and John Acton presided over a challenging game of Texas Bingo, with door prizes kindly provided by Thelma Weiner. Stephanie Trachtenberg played a mean fiddle to the tune of the *Bonanza* theme, accompanied by the antics of three "horses" who looked suspiciously like Wendy Campbell,

7/22/2017

Manny Pablo, and Joan Lunsford. The agenda was also peppered with video clips and sing-alongs, ending with a rousing rendition of "Happy Trails to You."

[Back to Top of Page](#)

"Add to Cart" Payment Policy for Trips a Success!



By Alice Slayton Clark, Communications and Programming Associate

Summer term marked the successful roll-out of a new registration policy for bus trips and special events with fees. All were processed this term as "add to cart" selections, where payment was collected at registration, and enrollment was provided on a first-come, first-served basis. We are pleased that this change went smoothly and proved highly efficient, reducing the administrative costs of collecting payments after enrollment.

One kink found in the new policy was allowing members to sign up two registrants in one transaction, to facilitate enrollment of an OLLI-member companion. Because the two registrations were linked by one transaction, class rosters were missing names, creating confusion for instructors and unexpected additional administrative costs.

For fall term, therefore, OLLI is eliminating the feature to add a guest when signing up for a bus trip or event with a fee. In order to maximize your chances of getting on a bus trip with an OLLI-member companion, we recommend that you coordinate your efforts and each sign up early.

OLLI staff is grateful for your patience as we work to make our registration process as efficient and user friendly as possible to the membership.

[Back to Top of Page](#)

Photo of the Month

7/22/2017



The July 2017 Photo of the Month theme was Sports. We selected Ed Marion's photo "South Paw Reliever," which may also be viewed at [this page](#). To view other photos by members of the Photography Club, visit the club's photo [website](#).

-- By **Angela Talaber, Photography Club Coordinator**

[Back to Top of Page](#)

Poet's Corner

Courtesy of the Poetry Workshop

A Tribute to Sebago

I once had a cat named Sebago,
 A beautiful seal point Ragdoll.
 His mother dull grey, his father a stray
 Their offspring a prize-winning furball.

Sebago was sweet, his habits unique,
 He loved to eat watermelon instead of good meat.
 He played the grand piano, both treble and bass
 Sometimes loud, sometimes soft on the keys he would race.

3 blind mice took a tumble
 Up and down they would run.
 It was always his favorite
 And he played just for fun.

He would purr and he would snuggle
 In our bed with his jungle
 Full of toys that squeaked and teased him
 Till he slept and the night appeared him.

What a joy it was to have him,
 And he lived for many years
 Spreading fun and affection
 To those he knew and all who loved him.

Gail Zander

[Back to Top of Page](#)

Arts & Music at George Mason

Performances, July 21 through Aug. 7



By **Shelly Gersten, OLLI E-News Staff Writer**

For tickets for either Center for the Arts (CFA) or Hylton, call 1-888-945-2468, buy tickets online through the event calendar (see links below), or visit the venue's box office. For more information, see the CFA [ticket page](#) or the Hylton [ticket purchase page](#).

At the Fairfax Campus Venues

No performances scheduled.

[Back to Top of Page](#)

Mason Student & Faculty Performances

(see music.gmu.edu for additional student recitals)

Chiao Ti Liu Piano Lecture Recital

Wed, Jul 26, 7:00
deLaski Choral Room
Admission: Free.

[Back to Top of Page](#)

At the Hylton Center (Manassas Campus)

Prince William Little Theatre: *Oklahoma!*

Fri, Jul 21, and Sat, Jul 22, 8:00
Sat, Jul 22, and Sun, Jul 23, 2:00
Fri, Jul 28, and Sat, Jul 29, 8:00
Sun, Jul 30, 2:00
Gregory Family Theater
Admission: Adults, \$25; seniors, \$20.

Gallery Exhibit: Marti Patchell, *Botanical Fusion*

Continues through Aug 26
The Gallery is open to the public Tue-Sat, 10:00 - 6:00, Thu, 10:00 - 8:00 and two hours before performances.
For more information, visit <https://cvpa.gmu.edu/gands>.
Gallery reception: Thu, Aug 3, 6:00 - 8:00. Wines by Stone Tower Winery. Gallery Receptions are free and open to the public, but an RSVP is required. RSVP to spavia@gmu.edu.
Buchanan Partners Art Gallery
Admission: Free.

Cello Fury: *Melodies, Moods, and Movies*

Wed, Aug 2, 11:00
Merchant Hall
Admission: \$15.

K-Tigers with K-Pop (taekwondo)

Sun, Aug 6, 5:00
Merchant Hall
Admission: \$50, \$40, \$30.

[Back to Top of Page](#)

For further details on any of the above events, please see the CFA [event calendar](#) and the Hylton Center [event calendar](#).

[Back to Top of Page](#)

Meetings & Clubs

The following list covering the next two weeks is extracted for your convenience from the master online calendar maintained by the office, with direct web links added when available. The list is accurate as of mid-week but to check anytime for the latest information, please view the latest forecast of upcoming events on our website (News/[OLLI Calendar](#)). *Note: All OLLI members are welcome at, and encouraged to attend, meetings of the Board of Directors, committees and resource groups, kickoff coffees, etc. (bolded below).*

Note that some activities and clubs will continue to meet even though OLLI is closed. Check with the coordinator for information on your club.

Sat Jul 22	10:30am	Tai Chi Club-TA-3
Mon Jul 24	10:00am	Bridge Club-TA-3
	10:30am	What's in the Daily News, cont'd.-TA-1
Tue Jul 25	9:30am	Annex Art-Annex
Wed Jul 26	10:30am	Tom Crooker Investment Forum-TA-1
Fri Jul 28	9:15am	Recorder Consort-TA-3
	9:30am	Craft and Conversation-Annex
	10:00am	Theater Lovers' Club-TA-1
	11:00am	Homer, etc.-Annex
Sat Jul 29	12:00pm	Photography Club-TA-3
	10:30am	Tai Chi Club-TA-3

[Back to Top of Page](#)

About *OLLI E-News*

OLLI E-News was created by Rod Zumbro, who served as its editor from 2005 to 2013.

Editorial Staff

Chief Editor: Paul Van Hemel

Technical Editor: Irene Osterman

Associate Editor: Sheri Siesseger

Weekly Editor Team: Jean Boltz, John Nash, Sheri Siesseger, Leslie Vandivere,
Paul Van Hemel

Proofreaders: Rebecca Jann, Susan Van Hemel, Polly Johnsen, Shirley Springfloat

Backup Chief Editor: Alice Slayton Clark

Submissions. Members are encouraged to submit letters to the editor, letters to Ms. Ollie Ettakit (on etiquette matters), OLLI-related news items, articles, and photos. Submit material to:

ollienewseditor@gmail.com.

Deadline – 6:00 Tuesday for that week's issue (6:00 Monday for letters to the editor); early submissions are greatly appreciated. Please limit articles to about 250 words.

Note: You can view past issues of *OLLI E-News* on the DocStore. To search the content of issues, use Search Our Site or put your search term in Google followed by "site:olli.gmu.edu/" without the quotes.

[Back to Top of Page](#)