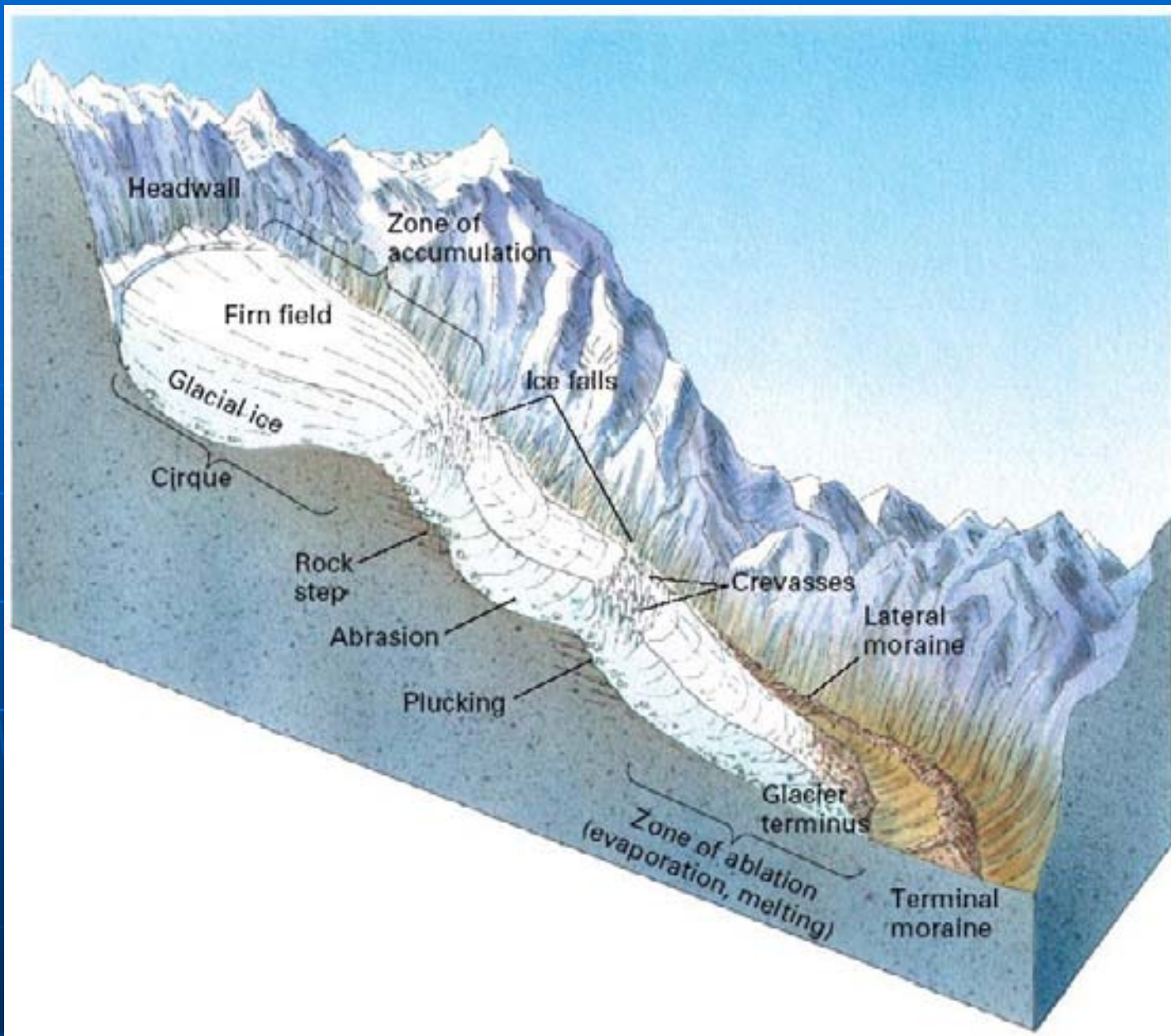


Ice

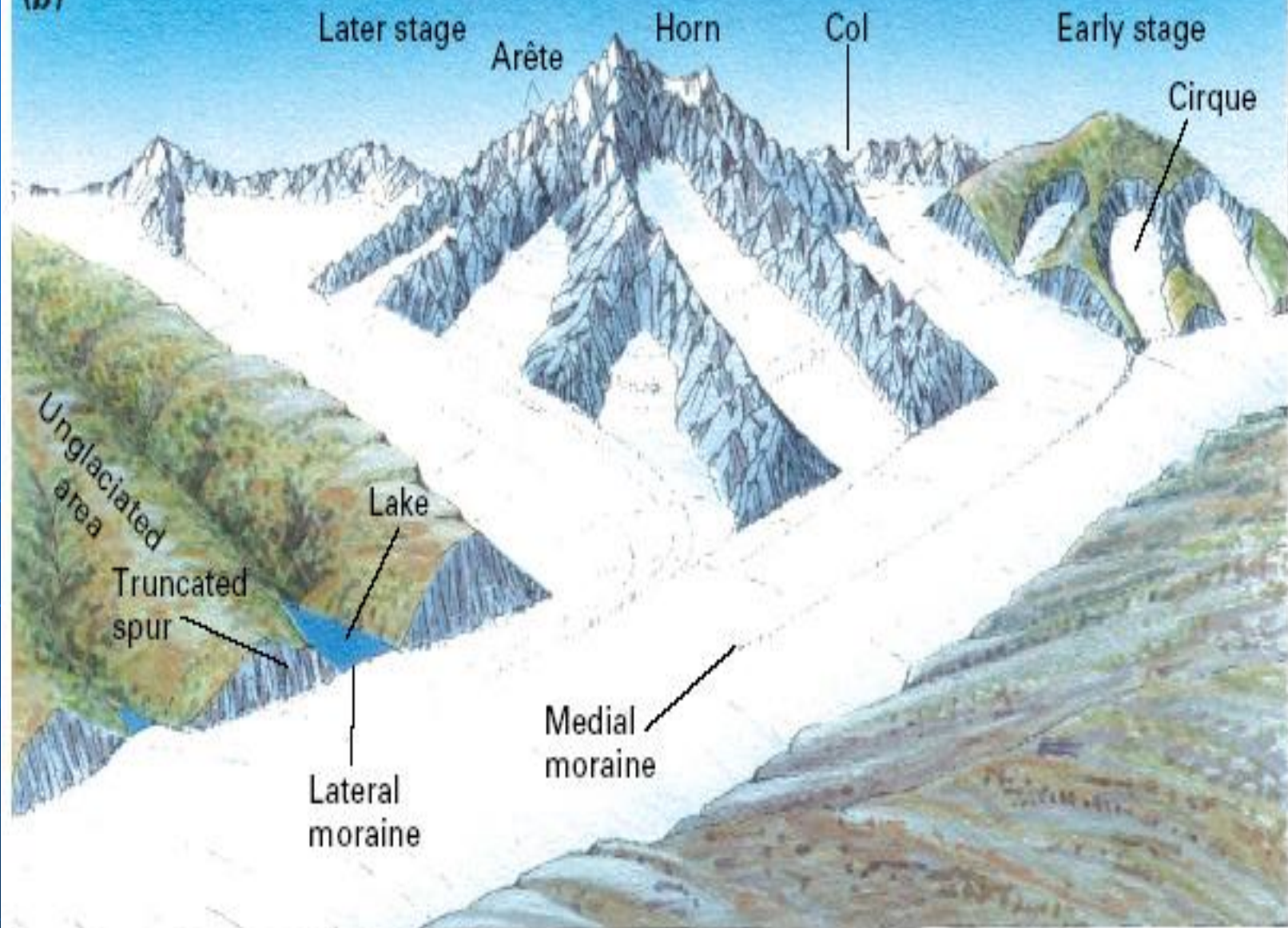
- Alpine or mountain
- Continental

Mountain Glaciation

- Spectacular
- All current mountains, larger in past
- U-shaped valleys, cirque, cirque lakes, tarn lakes, aretes, horns, cols, hanging valleys, moraines, fiords



(b)



(c)

























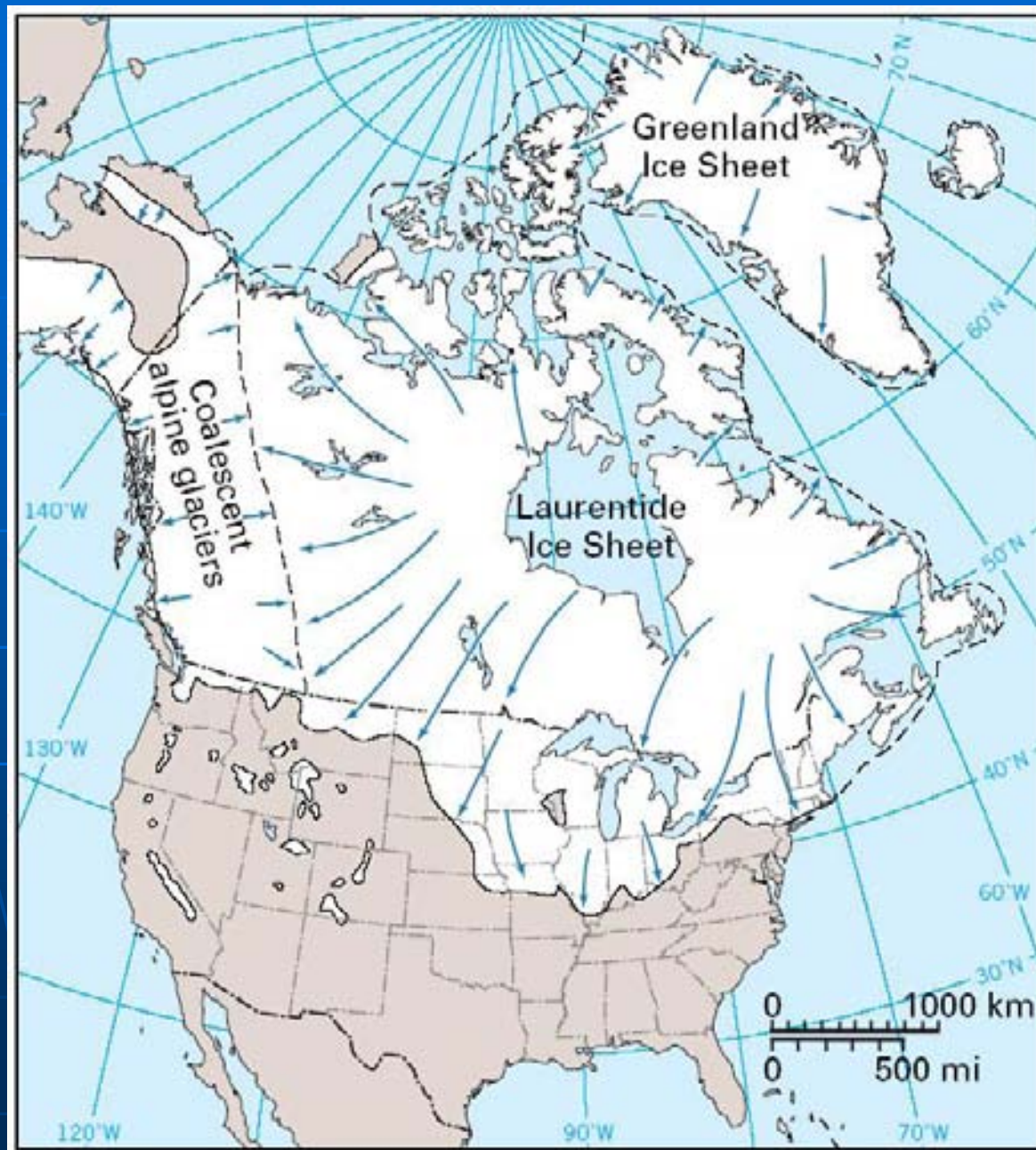


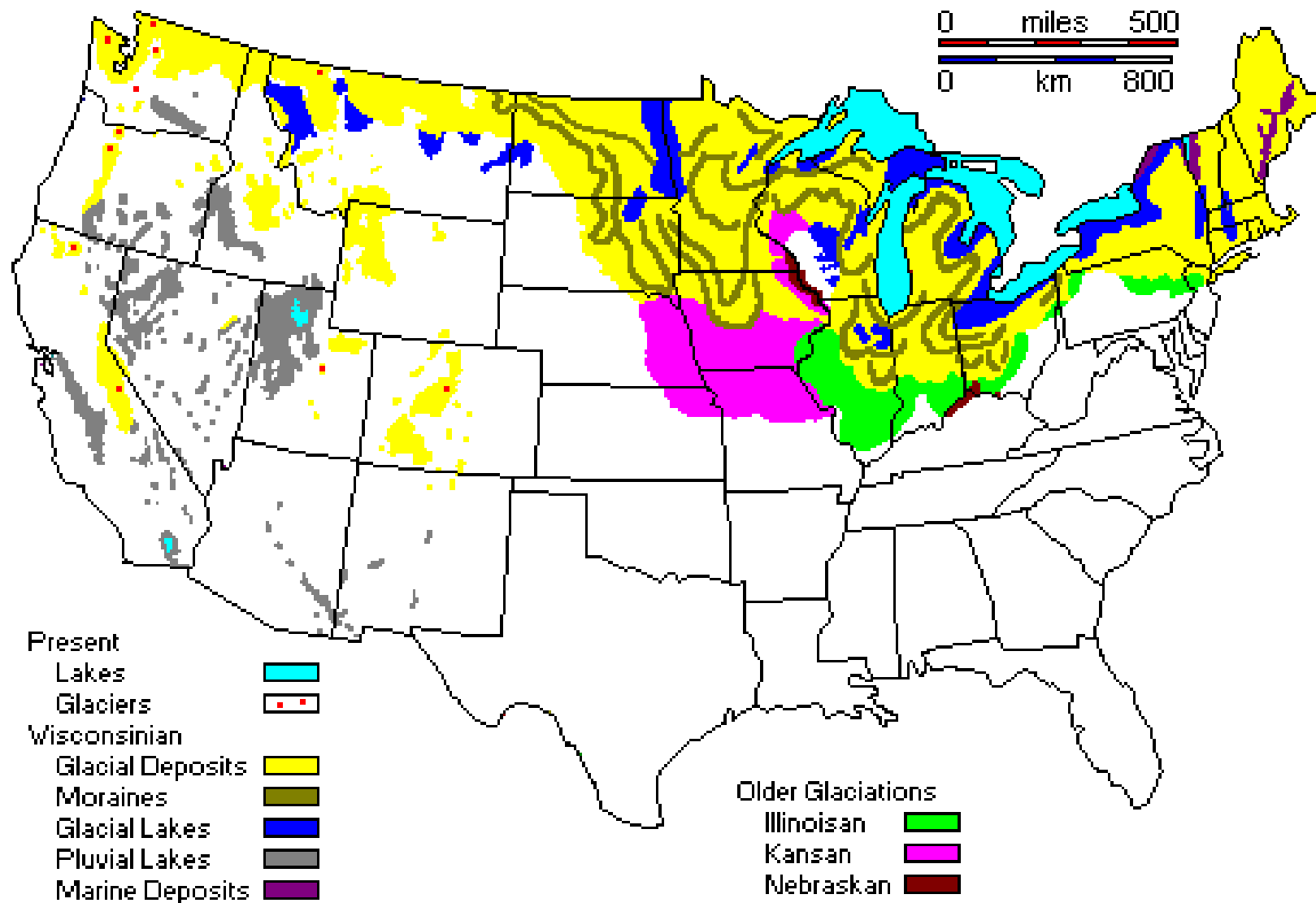




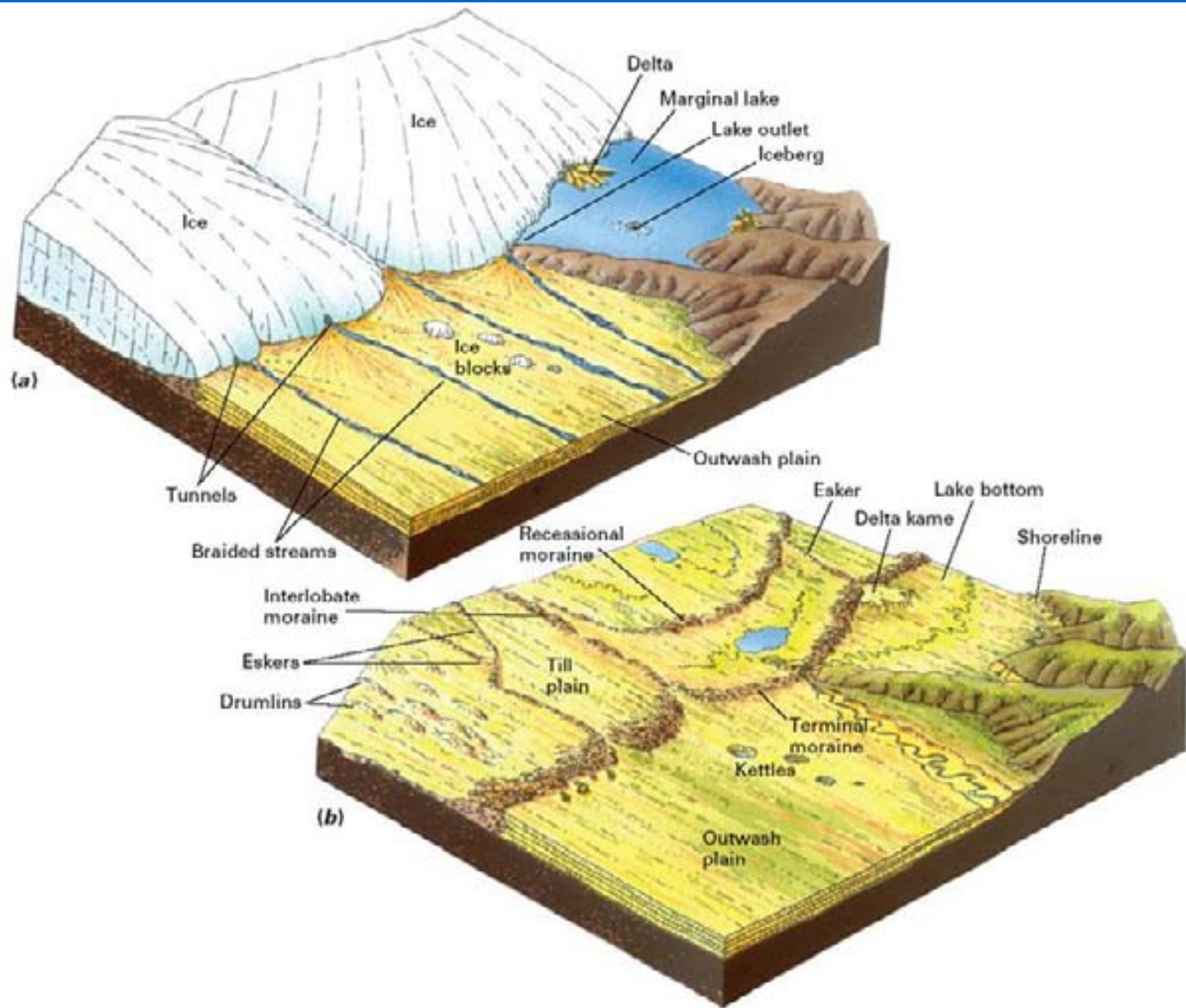
Continental Glaciation

- Greenland and Antarctica today
- Four major advances, 1 mi. yrs
- Last retreat No. Am. 10,000 BCE
- Hudson Bay origin No. Am.
- No. Am to Ohio and Missouri Rivers
- Driftless Area, Eskers, Kettle Lakes, Drumlins, Erratics, Moraines, Glacialfluvial plains and lakes

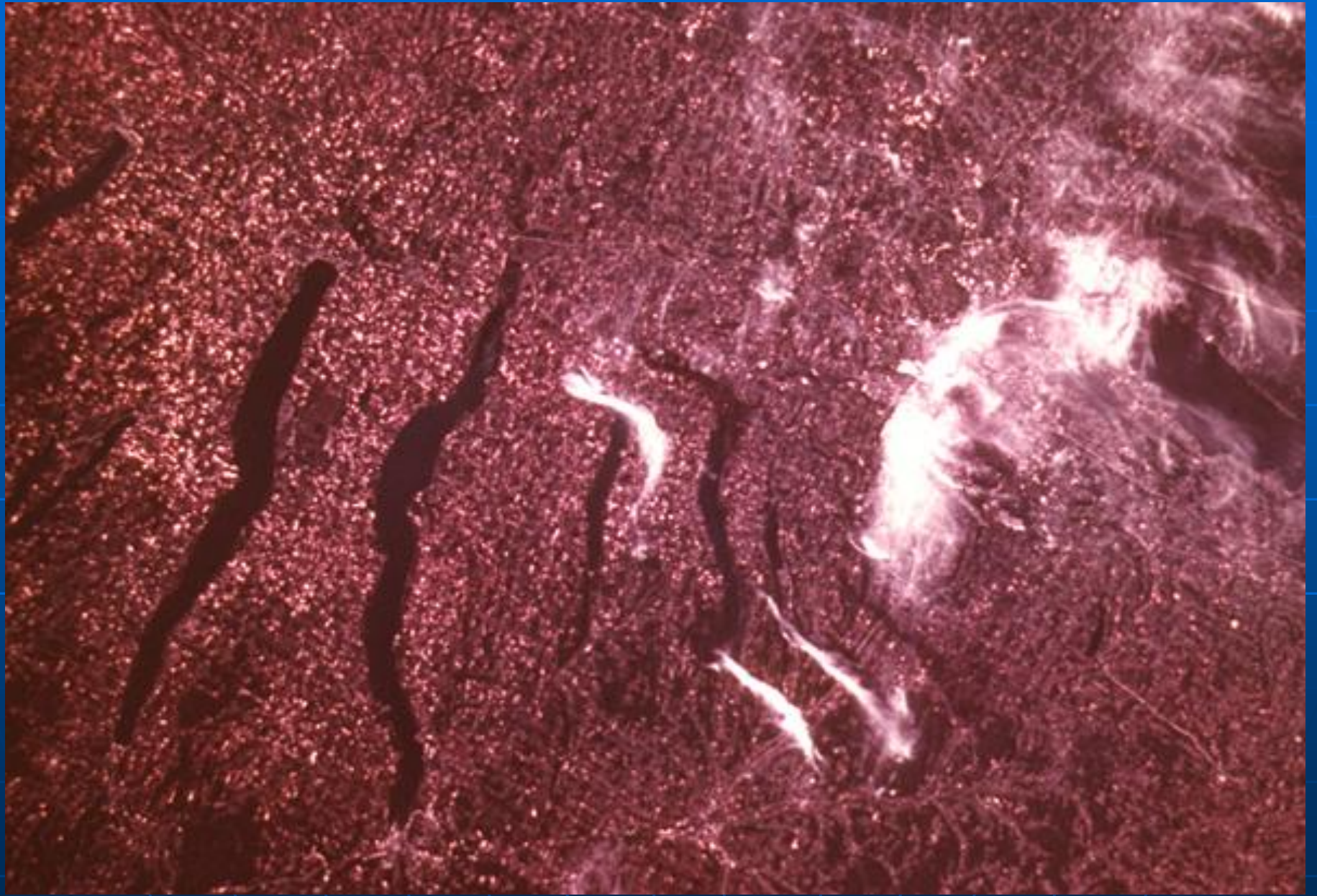










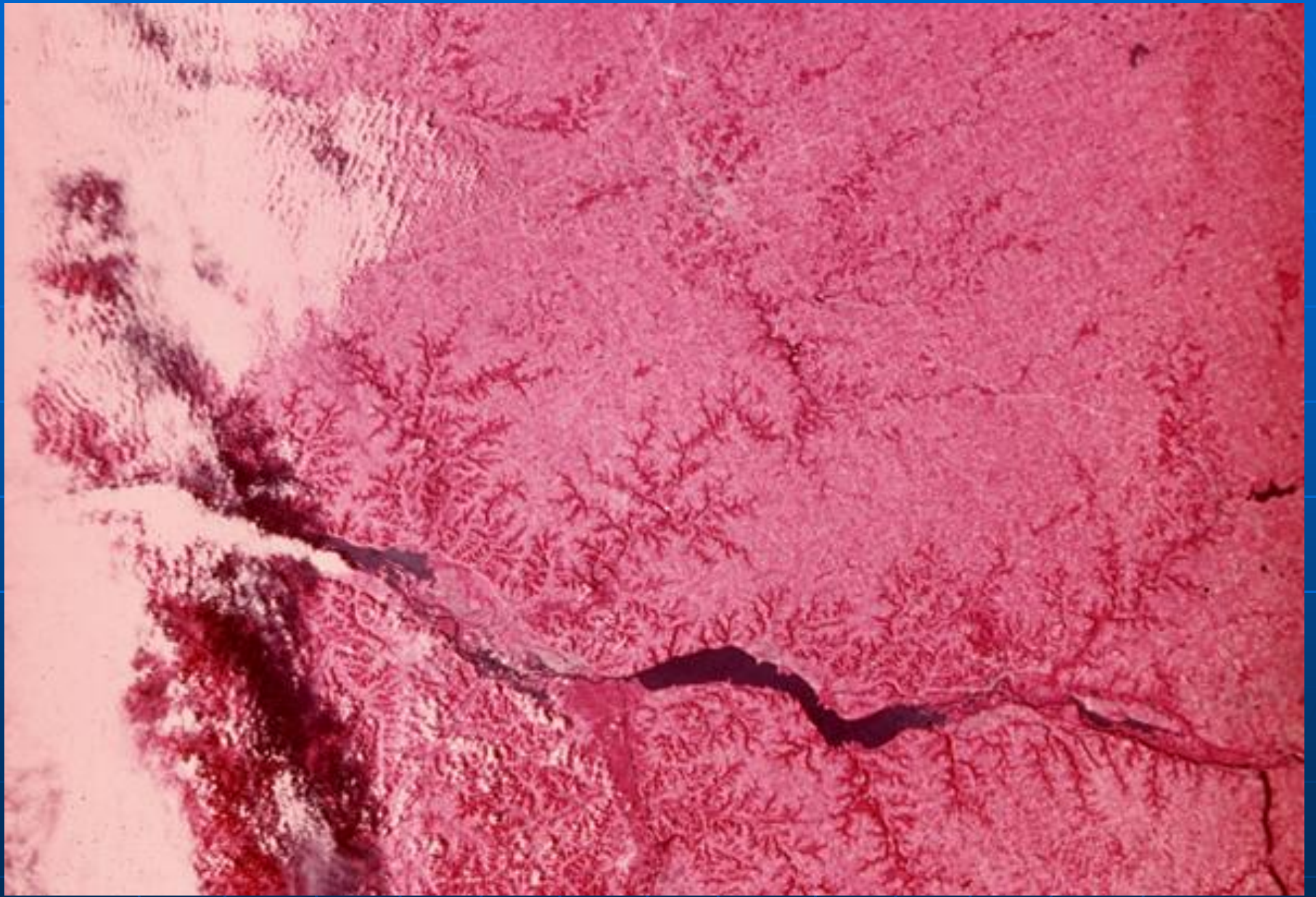
















Thank you!

