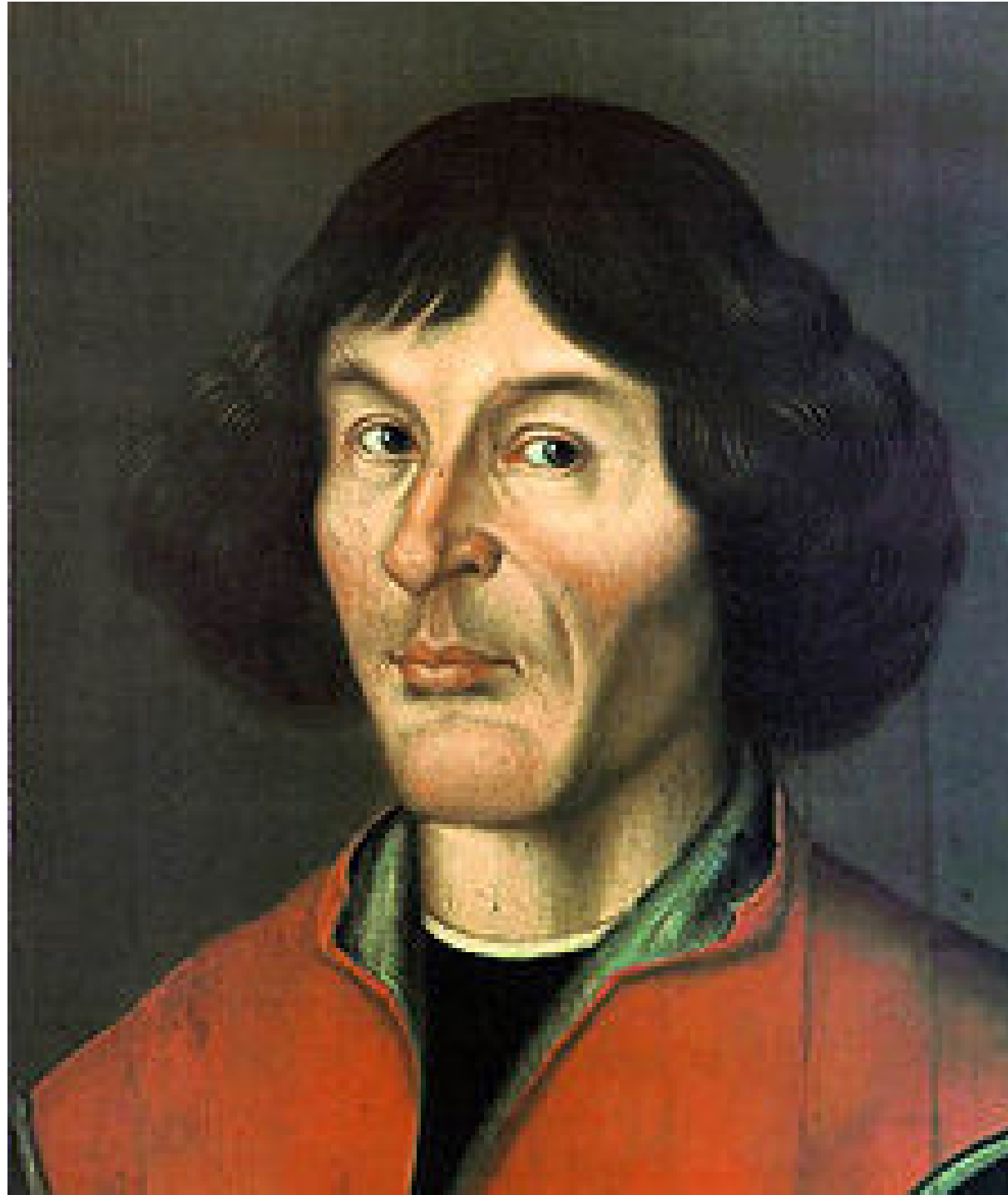


# Week Eight



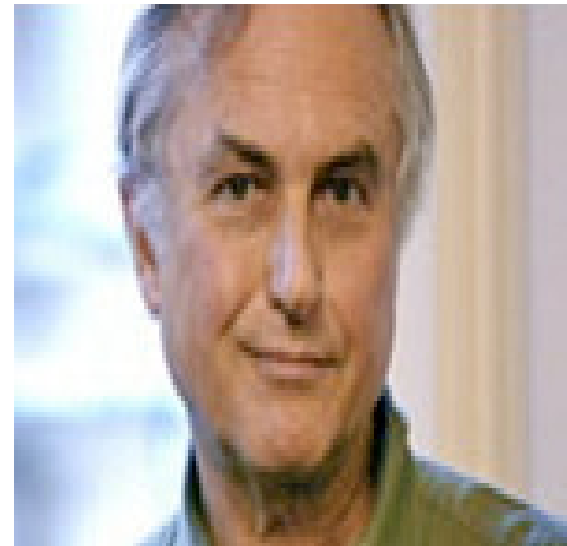








# MYTHOS vs LOGOS



















# Mythological and Pagan Roots of Holidays

- Emphasis on the Northern Hemisphere
- Emphasis on Western cultures.





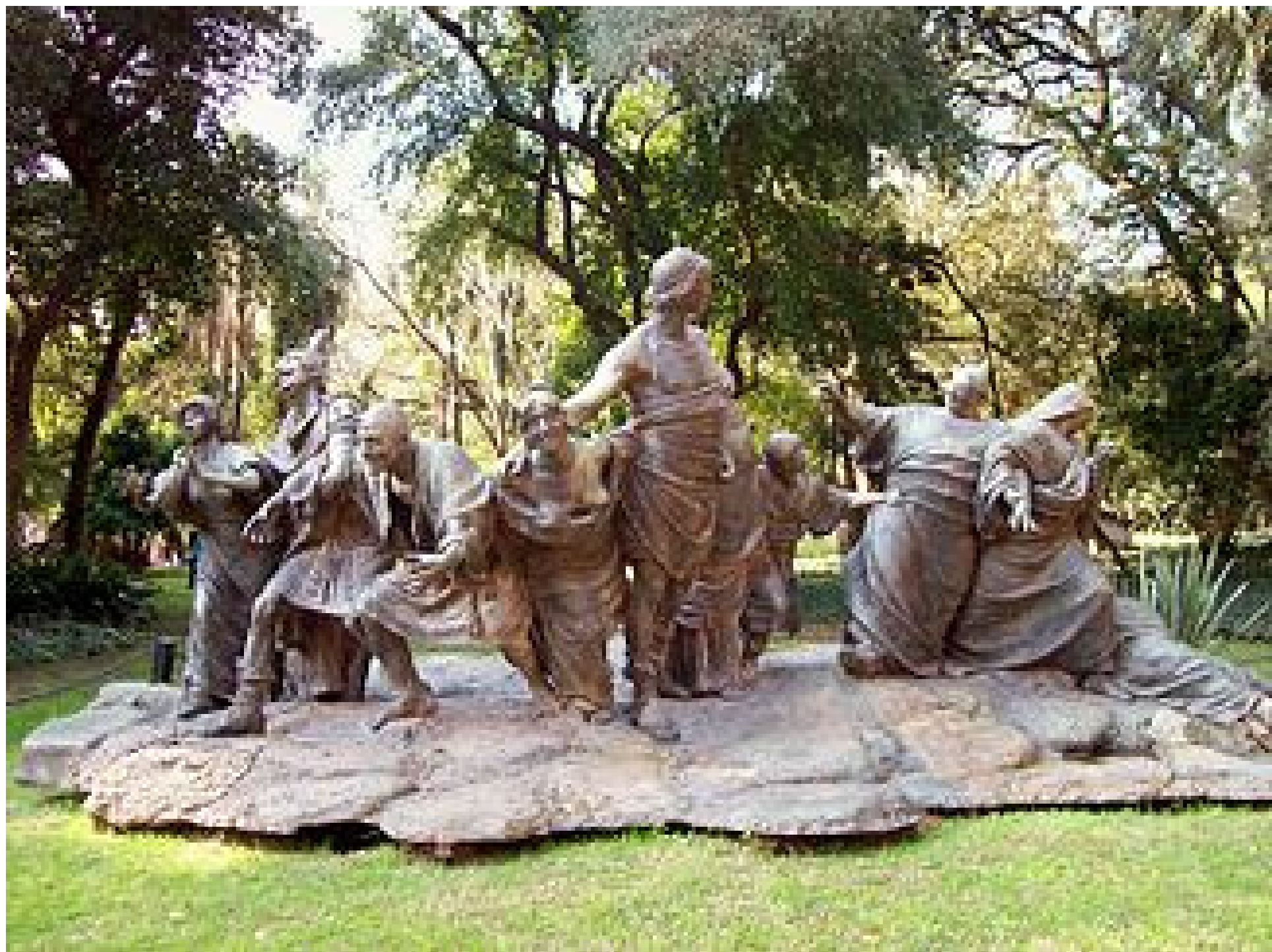












































# THE END

- Spirit of Life, come unto me.
- Sing in my heart, all the stirrings of compassion.
- Blow in the wind, rise in the sea;
- Move in the hand, giving life the shape of justice.
- Roots hold me close; wings set me free;
- Spirit of Life, come to me, come to me.

Neopagan ritual